

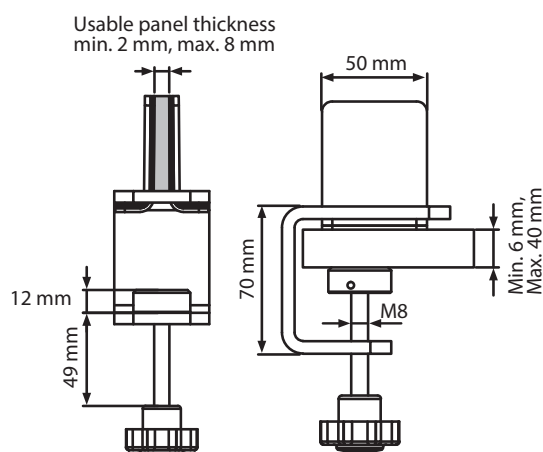
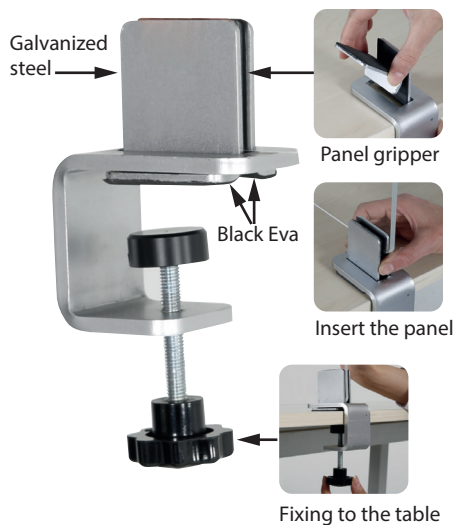
MID-SECTION CLAMP KIT



- Mid-Section Clamp Kit is designed to hold panel to separate the space of a table, desk, counter or cashier.
- It fits table or desktop from 6 mm to 40 mm thick.
- To avoid any damages to the desk, it is supported with black soft pads (EVA) where it touches to the table and panel.
- It can hold panels min. 2 mm and max. 8 mm.
- Partitions can be easily removed and relocated. With two mid-section clamps, clamp position on the table or on panel is adjustable so that partition spaces on table are adjusted as needed.
- Mid-Section Clamp Kit is easy to install, making it easy to attach on a table or desk. It requires no drilling, easily slid on desk-top by untightening stylish black knob.
- 3 divider panel options are offered individually: Clear, Frosted and Wood.
- These partitions allow for a personal workstation for each person. Each divider panel acts as a moveable barrier to provide separate

space and block distractions as well as guarding unwanted germs, viruses or so.

- The panels can be moved easily and remounted. Partition dividers have smooth edges to avoid any harm.
- Clear Divider is made of Acrylic which provides resistant to impact and scratches. Clear Desk Dividers effectively shields employees and the customers for safety.
- Wood Dividers are made of MDF and double sided chalk surface. It is suitable for use with waterbase chalk pen.
- Frosted Divider is of also made of Acrylic with smooth edges. It provides a barrier while still allowing light to filter through. Frosted acrylic is easy to keep clean and separates work area and desk from others. Wood Divider provides solid barrier and privacy to work stations.
- Clear and Frosted Panels can be easily cleaned and sanitized with a soap and water solution spray or disinfectant spray with an alcohol content of 75% or less.
- Mid-Section Clamp Kit and Divider panels are suitable for a variety of restaurant styles, helping to adjust spaces on the tables. Moreover it works well for offices, cashiers, medical facilities, call centres and education and testing centres.



ARTICLE	DESCRIPTION
UHMCOG0000	Mid-Section Clamp Kit to fix Table Divider Panel, packed by 2

PANEL	DESCRIPTION
UHOCD06560	Clear Table Divider Panel, 650 X 600 mm, packed by 2
UHOCD09070	Clear Table Divider Panel, 900 X 700 mm, packed by 2
UHOCD10070	Clear Table Divider Panel, 1000 X 700 mm, packed by 2
UHOCD12070	Clear Table Divider Panel, 1200 X 700 mm, packed by 2
UHOFD06560	Frosted Table Divider Panel, 650 X 600 mm, packed by 2
UHOFD09070	Frosted Table Divider Panel, 900 X 700 mm, packed by 2
UHOFD10070	Frosted Table Divider Panel, 1000 X 700 mm, packed by 2
UHOFD12070	Frosted Table Divider Panel, 1200 X 700 mm, packed by 2
UHOWD06560	Chalk Divider Panel, 650 X 600 mm, packed by 2
UHOWD09070	Chalk Divider Panel, 900 X 700 mm, packed by 2
UHOWD10070	Chalk Divider Panel, 1000 X 700 mm, packed by 2

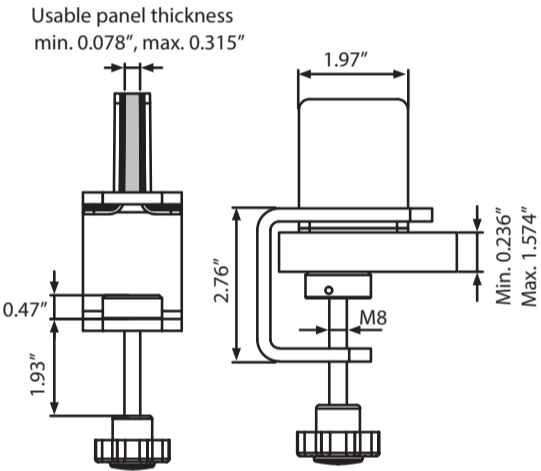
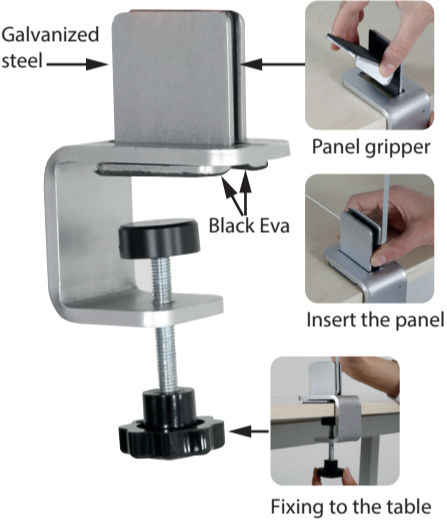


MID-SECTION CLAMP KIT



- Mid-Section Clamp Kit is designed to hold panel to separate the space of a table, desk, counter or cashier.
- It fits table or desktop from 0.236" to 1.574" thick.
- To avoid any damages to the desk, it is supported with black soft pads (EVA) where it touches to the table and panel.
- It can hold panels min. 0.078" and max. 0.315".
- Partitions can be easily removed and relocated. With two mid-section clamps, clamp position on the table or on panel is adjustable so that partition spaces on table are adjusted as needed.
- Mid-Section Clamp Kit is easy to install, making it easy to attach on a table or desk. It requires no drilling, easily slid on desk-top by untightening stylish black knob.
- 3 divider panel options are offered individually: Clear, Frosted and Wood.
- These partitions allow for a personal workstation for each person. Each divider panel acts as a moveable barrier to provide separate

- space and block distractions as well as guarding unwanted germs, viruses or so.
- The panels can be moved easily and remounted. Partition dividers have smooth edges to avoid any harm.
- Clear Divider is made of Acrylic which provides resistant to impact and scratches. Clear Desk Dividers effectively shields employees and the customers for safety.
- Wood Dividers are made of MDF and double sided chalk surface. It is suitable for use with waterbase chalk pen.
- Frosted Divider is of also made of Acrylic with smooth edges. It provides a barrier while still allowing light to filter through. Frosted acrylic is easy to keep clean and separates work area and desk from others. Wood Divider provides solid barrier and privacy to work stations.
- Clear and Frosted Panels can be easily cleaned and sanitized with a soap and water solution spray or disinfectant spray with an alcohol content of 75% or less.
- Mid-Section Clamp Kit and Divider panels are suitable for a variety of restaurant styles, helping to adjust spaces on the tables. Moreover it works well for offices, cashiers, medical facilities, call centres and education and testing centres.



ARTICLE	DESCRIPTION
UHCMOG0000	Mid-Section Clamp Kit to fix Table Divider Panel, packed by 2

PANEL	DESCRIPTION
UHOCD02430	Clear Table Divider Panel, 24" X 30", packed by 2
UHOCD03030	Clear Table Divider Panel, 30" X 30", packed by 2
UHOCD03630	Clear Table Divider Panel, 36" X 30", packed by 2
UHOCD04230	Clear Table Divider Panel, 42" X 30", packed by 2
UHOFD02430	Frosted Table Divider Panel, 24" X 30", packed by 2
UHOFD03030	Frosted Table Divider Panel, 30" X 30", packed by 2
UHOFD03630	Frosted Table Divider Panel, 36" X 30", packed by 2
UHOFD04230	Frosted Table Divider Panel, 42" X 30", packed by 2
UHOWD02430	Chalk Divider Panel, 24" X 30", packed by 2
UHOWD03030	Chalk Divider Panel, 30" X 30", packed by 2
UHOWD03630	Chalk Divider Panel, 36" X 30", packed by 2
UHOWD04230	Chalk Divider Panel, 42" X 30", packed by 2

